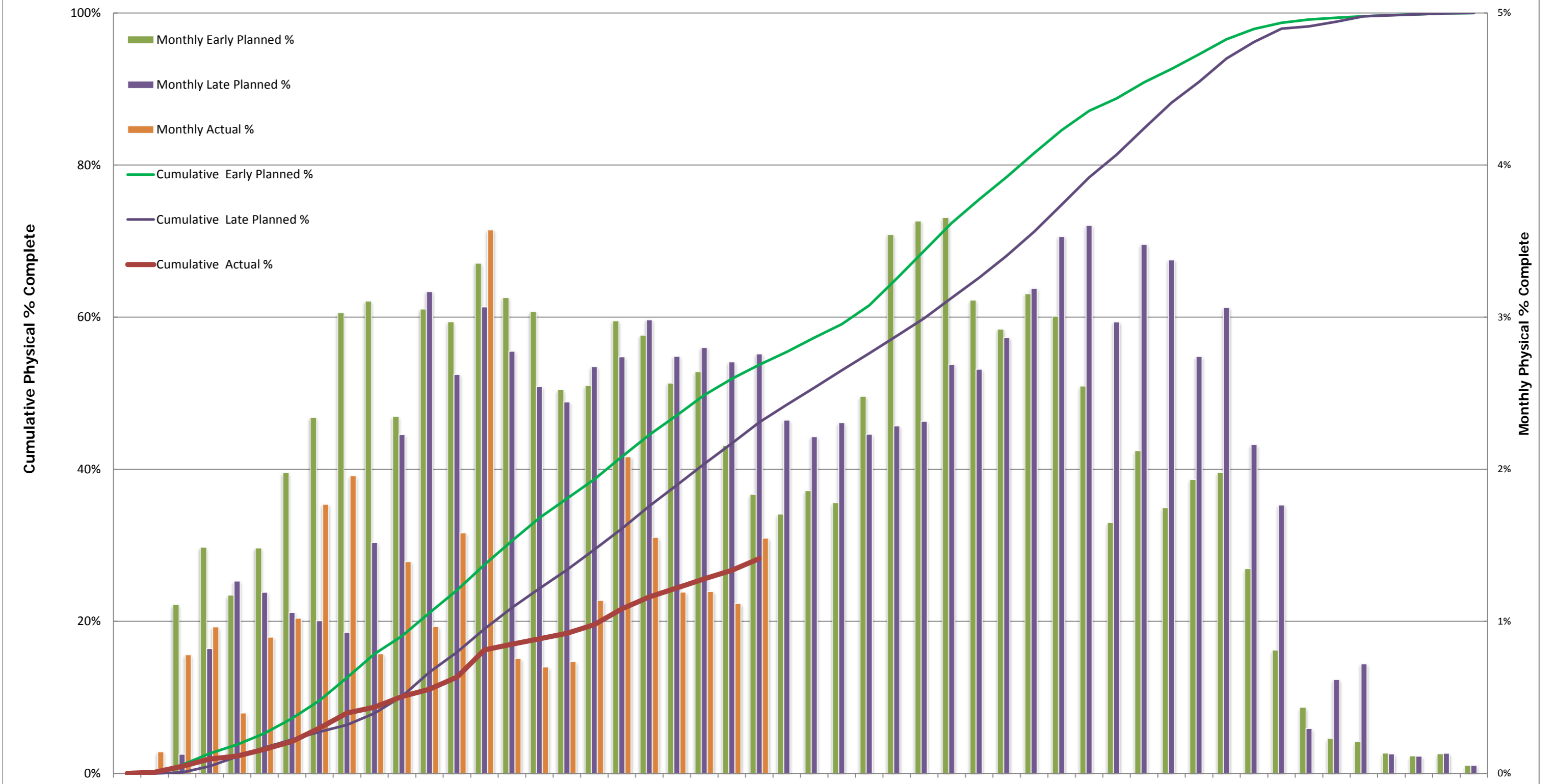


# Attachment-1 Progress S-Curve



	May-16	Jun-16	Jul-16	Aug-16	Sep-16	Oct-16	Nov-16	Dec-16	Jan-17	Feb-17	Mar-17	Apr-17	May-17	Jun-17	Jul-17	Aug-17	Sep-17	Oct-17	Nov-17	Dec-17	Jan-18	Feb-18	Mar-18	Apr-18	May-18	Jun-18	Jul-18	Aug-18	Sep-18	Oct-18	Nov-18	Dec-18	Jan-19	Feb-19	Mar-19	Apr-19	May-19	Jun-19	Jul-19	Aug-19	Sep-19	Oct-19	Nov-19	Dec-19	Jan-20	Feb-20	Mar-20	Apr-20	May-20	Jun-20						
Monthly Early Planned %	0.01%	0.01%	1.11%	1.49%	1.17%	1.48%	1.98%	2.34%	3.03%	3.11%	2.35%	3.05%	2.97%	3.35%	3.13%	3.04%	2.52%	2.55%	2.98%	2.88%	2.57%	2.64%	2.16%	1.83%	1.70%	1.86%	1.78%	2.48%	3.54%	3.63%	3.65%	3.11%	2.92%	3.15%	3.01%	2.55%	1.65%	2.12%	1.75%	1.93%	1.98%	1.35%	0.81%	0.43%	0.23%	0.21%	0.13%	0.11%	0.13%	0.05%						
Monthly Late Planned %	0.00%	0.00%	0.13%	0.82%	1.27%	1.19%	1.06%	1.00%	0.93%	1.52%	2.23%	3.17%	2.62%	3.07%	2.78%	2.54%	2.44%	2.67%	2.74%	2.98%	2.74%	2.80%	2.71%	2.16%	1.83%	1.70%	1.86%	1.78%	2.48%	3.54%	3.63%	3.65%	3.11%	2.92%	3.15%	3.01%	2.55%	1.65%	2.12%	1.75%	1.93%	1.98%	1.35%	0.81%	0.43%	0.23%	0.21%	0.13%	0.11%	0.13%	0.05%					
Monthly Actual %	0.01%	0.14%	0.78%	0.96%	0.40%	0.90%	1.02%	1.77%	1.96%	0.79%	1.39%	0.97%	1.58%	3.57%	0.76%	0.70%	2.44%	1.14%	2.08%	1.55%	1.19%	1.20%	1.12%	1.55%																																
Cumulative Early Planned %	0.01%	0.02%	1.13%	2.62%	3.79%	5.27%	7.25%	9.59%	12.61%	15.72%	18.07%	21.12%	24.09%	27.44%	30.57%	33.61%	36.13%	38.68%	41.65%	44.53%	47.10%	49.74%	51.90%	53.73%	55.43%	57.29%	59.07%	61.55%	65.09%	68.72%	72.38%	75.49%	78.41%	81.56%	84.57%	87.12%	88.76%	90.88%	92.63%	94.56%	96.54%	97.89%	98.70%	99.13%	99.36%	99.57%	99.70%	99.82%	99.95%	100.00%						
Cumulative Late Planned %	0.00%	0.00%	0.13%	0.95%	2.22%	3.41%	4.47%	5.47%	6.40%	7.92%	10.14%	13.31%	15.94%	19.00%	21.78%	24.32%	26.77%	29.44%	32.18%	35.16%	37.90%	40.70%	43.41%	46.17%	48.49%	50.71%	53.01%	55.24%	57.53%	59.84%	62.53%	65.19%	68.06%	71.25%	74.78%	78.38%	81.35%	84.83%	88.21%	90.95%	94.01%	96.17%	97.94%	98.23%	98.85%	99.57%	99.70%	99.81%	99.95%	100.00%						
Cumulative Actual %	0.01%	0.15%	0.93%	1.89%	2.29%	3.19%	4.21%	5.98%	7.94%	8.72%	10.12%	11.08%	12.66%	16.24%	16.99%	17.69%	18.43%	19.57%	21.65%	23.20%	24.39%	25.59%	26.71%	28.25%																																